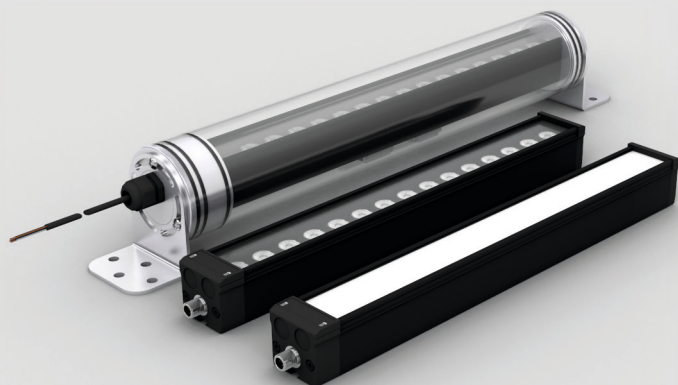


Lighting up Machine Vision

Illumination Technologies by wenglor.



Bar Lights

wenglor LED bar lights are a linear array of LEDs with excellent brightness and homogeneity balance across many situations, such as creating a darkfield effect to illuminate shiny parts or to create a brightfield effect to flood an area with powerful illumination.



www.wenglor.com/Bar-Lights

LBA	LBD	LB9
Bar light	Bar light diffuse	Bar light IP69K
From 125 mm to 500 mm	From 125 mm to 500 mm	From 125 mm to 500 mm
Light source: white, red, infrared	Light source: white, red, infrared	Light source: white, red, infrared
Protection: IP65	Protection: IP65	Protection: IP69K



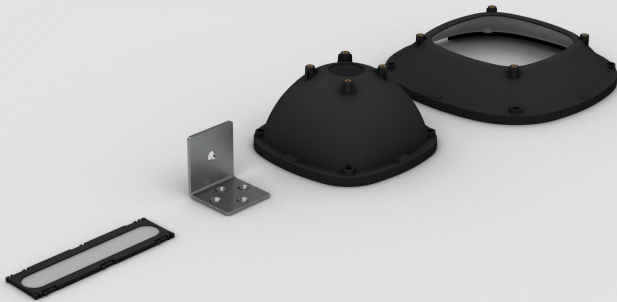
Ring Lights

Ring lights are normally positioned around a Machine Vision camera's optical axis, giving the image a high-intensity brightfield effect. wenglor has a range of ring light products suitable for homogeneously illuminating at both large and small working distances.



www.wenglor.com/RingLights

LMLX	LMRX	ZVZF1
Low angle light	Modular ring light	Ring light
Inner Ø: 80 mm or 130 mm	Inner Ø: 80 mm or 130 mm	Inner Ø: 50 mm
Light source: white-infrared & red-cyan	Light source: white-infrared & red-cyan	Light source: white, red, infrared
Protection: IP65	Protection: IP65	Protection: IP67



Accessories

System components for illumination technology include mounting devices, special accessories and angle changers to provide a complete Machine Vision lighting system.



www.wenglor.com/Illumination-Accessories

ZBAG	ZMRG	ZMRX001 & ZBBX001 & ZBAZ001
Angle changer	Dome & low angle accessories	Mounting brackets
For bar lights	For modular ring lights	Material: aluminum
Beam angle from $\pm 7^\circ$ up to $\pm 25^\circ$		



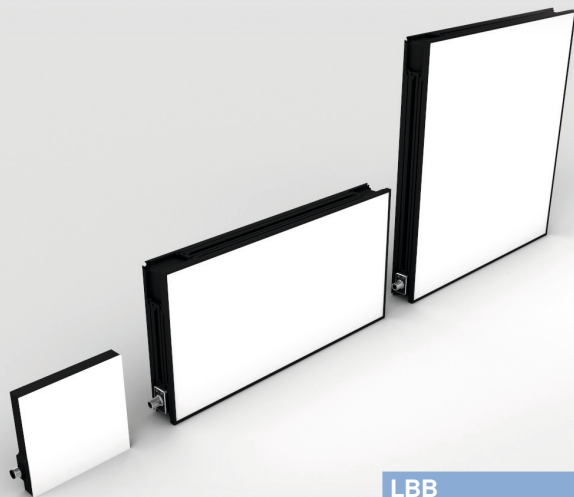
Illumination Kit

The illumination kit enables testing of illumination products in various applications in order to create Machine Vision solutions rapidly.



www.wenglor.com/product/LABKIT-WENGLOR-TPL

The illumination kit contains
Bar lights and angle changers
Modular ring light with dome accessory and low angle accessory
Flat dome light
Mounting accessories, power supply and cable



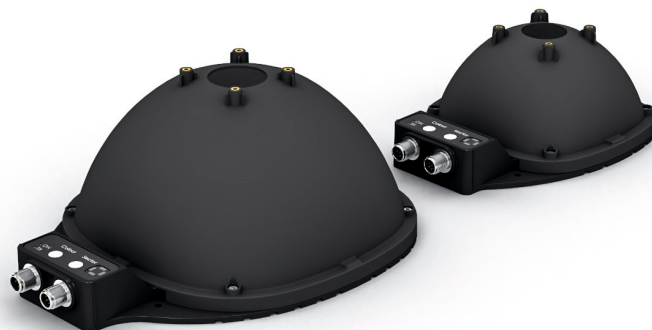
Flat Lights

Backlights or flat lights are often used to create silhouettes around components to generate robust black-on-white contrast. They can also be used to work closely to samples as a highly diffuse direct LED illumination – meaning they can be a powerful tool for illuminating reflective surfaces.



www.wenglor.com/FlatLights

LBB	ZVZF3 & ZVZF4
Large flat light	Compact flat light
200 × 200 mm to 500 × 500 mm	60 × 60 mm to 180 × 180 mm
Light source: white, red, infrared	Light source: white, infrared
Protection: IP40	Protection: IP67



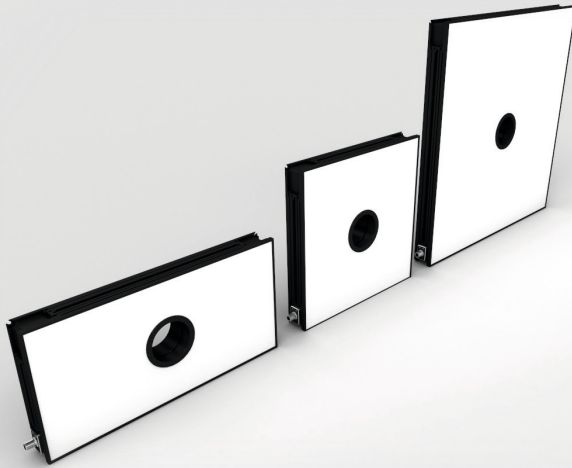
Dome Lights

Dome lights are excellent for the inspection of uneven surfaces. The highly diffuse lighting from a dome is also perfectly suited for the inspection of metals and shiny parts. wenglor dome lights use some novel features such as hole aperture adapters to assist with complex feature inspection.



www.wenglor.com/DomeLights

LMDX
Dome light
Inner Ø: 80 mm or 130 mm
Light source: white-infrared & red-cyan
Protection: IP65



Flat Dome Lights

Flat dome lights are most often used as top lights or area lighting to homogeneously illuminate large areas. The housing is constructed like an LED flat light with a camera hole in the center. Flat domes are typically used at double the size of the field of view to perfectly illuminate many types of surfaces.



www.wenglor.com/FlatDomeLights

LFD

Large flat dome light

200 × 200 mm to 500 × 500 mm

Light source: white, red, infrared

Protection: IP40



Spot Lights

Spot illumination is typically a highly focused light source, perfect for creating contrast on specific features from various working distances. wenglor spot lights are designed to be easily integrated whilst providing bright and homogeneous illumination for image processing.



www.wenglor.com/SpotLights

ZVZF2

Spot lights

M18 housing

Light source: white, red, infrared

Protection: IP67



www.wenglors.com/Illuminations
info@wenglors.com