

# Flat Dome Light

White light, 400 × 300 mm

## LFDW302

Part Number



- Easy and flexible installation
- High homogeneity
- High performance: high intensity even in continuous mode
- No external control required

The LFD series flat dome lights are high-diffuse lights with a camera connection. Due to their intense luminous flux and high homogeneity, they are perfectly suited for large-area applications such as robot-assisted pick-and-place. They can be used in continuous mode or synchronized with the machine vision camera in strobe mode via PNP or NPN inputs. The light is characterized by its narrow edges (4 mm) and easy mounting thanks to the T-slot fastener and the anchor point around the housing. Cameras can be connected easily on the rear of the light.

### Technical Data

#### Optical Data

Light Source	White Light
Color temperature	6500 K
White light output	44300 Lux

#### Electrical Data

Supply Voltage	21,6...26,4 V DC
Power	64,8 W
Current Consumption Continuous Mode (U <sub>b</sub> = 24 V)	2,7 A
Rise time	15 µs
Fall time	10 µs
Input signal	PNP/NPN
Temperature Range	-10...40 °C
Storage temperature	-20...60 °C
Short Circuit Protection	yes
Reverse Polarity Protection	yes
Overload Protection	yes
Protection Class	III
Dimming	0...10 V ± 100...30%
Overdrive	no

#### Mechanical Data

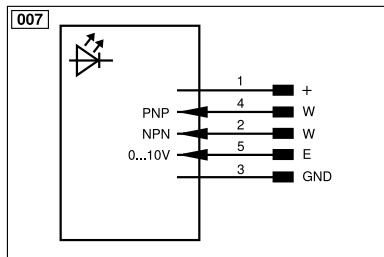
Luminous Field Length (L)	400 mm
Luminous Field Width (W)	300 mm
Luminous Field	400 × 300 mm
Housing Material	Aluminum, anodised
Housing Material	Plastic, ABS/GF
Degree of Protection	IP40
Optic Cover	Plastic, PMMA
Connection	M12 × 1; 5-pin
Max. cable length	10 m
Camera aperture inner diameter	65 mm

#### Function

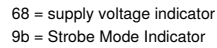
Operating modes	Continuous, Strobe
Connection Diagram No.	007
Control Panel No.	T16
Suitable Mounting Technology No.	926


### Complementary Products

ZC4G003 connection cable
ZDCG004 connection cable
ZDCG005 connection cable



## T16



Legend					
+	Supply Voltage +	nc	Not connected	ENBR5422	Encoder B/B̄ (TTL)
-	Supply Voltage 0 V	U	Test Input	ENa	Encoder A
~	Supply Voltage (AC Voltage)	Ū	Test Input inverted	ENb	Encoder B
A	Switching Output (NO)	W	Trigger Input	AMIN	Digital output MIN
Ā	Switching Output (NC)	W-	Ground for the Trigger Input	AMAX	Digital output MAX
V	Contamination/Error Output (NO)	O	Analog Output	AOK	Digital output OK
Ṽ	Contamination/Error Output (NC)	O-	Ground for the Analog Output	SY In	Synchronization In
E	Input (analog or digital)	BZ	Block Discharge	SY OUT	Synchronization OUT
T	Teach Input	AMv	Valve Output	OLT	Brightness output
Z	Time Delay (activation)	a	Valve Control Output +	M	Maintenance
S	Shielding	b	Valve Control Output 0 V	rsv	Reserved
RxD	Interface Receive Path	SY	Synchronization	Wire Colors according to DIN IEC 60757	
TxD	Interface Send Path	SY-	Ground for the Synchronization		
RDY	Ready	E+	Receiver-Line	BK	Black
GND	Ground	S+	Emitter-Line	BN	Brown
CL	Clock	⊕	Grounding	RD	Red
E/A	Output/Input programmable	SnR	Switching Distance Reduction	OG	Orange
	IO-Link	Rx+/-	Ethernet Receive Path	YE	Yellow
PoE	Power over Ethernet	Tx+/-	Ethernet Send Path	GN	Green
IN	Safety Input	Bus	Interfaces-Bus A(+)/B(-)	BU	Blue
QSSD	Safety Output	La	Emitted Light disengageable	VT	Violet
Signal	Signal Output	Mag	Magnet activation	GY	Grey
BI_D+/-	Ethernet Gigabit bidirect. data line (A-D)	RES	Input confirmation	WH	White
ENo RS422	Encoder 0-pulse 0/0̄ (TTL)	EDM	Contact or Monitoring	PK	Pink
PT	Platinum measuring resistor	ENAR5422	Encoder A/Ā (TTL)	GNYE	Green/Yellow