

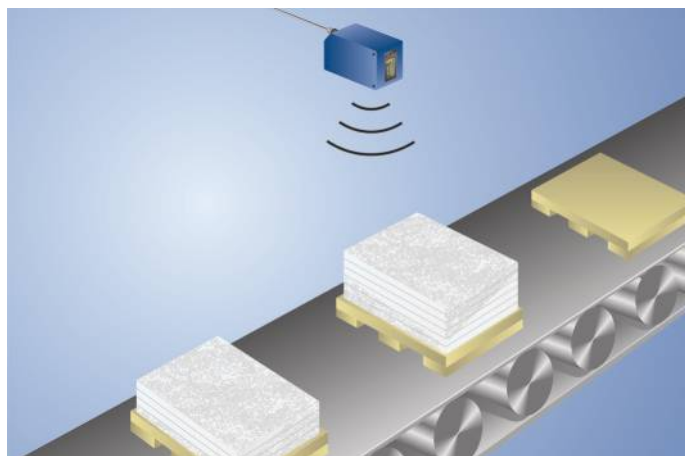
Distance Sensor

UMS303U035



- Digital and analog output
- Menu-driven settings
- Synchronous and multiplex mode
- Temperature drift eliminable

These ultrasonic sensors evaluate the sound reflected from the object. They can detect almost any object and are especially well suited for monitoring fill levels of liquids and bulk goods and for detecting transparent objects. The sensor detects objects regardless of material, state of aggregation, color, or degree of transparency. The graphics display allows for easy, menu-driven sensor setup. Convenient parametrization and quick diagnosis are possible via the IO-Link interface. The sensor can only be used in reflex mode operation.



Ultrasonic Data

| | |
|---------------------------|---------------|
| Working Range | 200...3000 mm |
| Measuring Range | 2800 mm |
| Reproducibility maximum | 2 mm |
| Linearity Deviation | 4 mm |
| Resolution | 0,3 mm |
| Ultrasonic Frequency | 120 kHz |
| Opening Angle | < 14 ° |
| Service Life (T = +25 °C) | 100000 h |
| Switching Hysteresis | 15 mm |

Electrical Data

| | |
|---|------------------|
| Supply Voltage | 18...30 V DC |
| Current Consumption (U _b = 24 V) | < 50 mA |
| Switching Frequency | 3 Hz |
| Response Time | < 167 ms |
| Temperature Range | -30...60 °C |
| Number of Switching Outputs | 2 |
| Switching Output Voltage Drop | < 2,5 V |
| PNP Switching Output/Switching Current | 100 mA |
| Analog Output | 4...20 mA |
| Synchronous Mode | up to 40 sensors |
| Multiplex Mode | up to 16 sensors |
| Short Circuit Protection | yes |
| Reverse Polarity Protection | yes |
| Overload Protection | yes |
| Interface | IO-Link V1.0 |
| Protection Class | III |

Mechanical Data

| | |
|----------------------|----------------------------------|
| Setting Method | Menu (OLED) |
| Housing Material | Plastic, ABS |
| Sensing face | Epoxy resin/glass bubble mixture |
| Sensing face | Plastic, PBT |
| Sensing face | Silicone |
| Degree of Protection | IP67 |
| Connection | M12 × 1; 4/5-pin |

Safety-relevant Data

| | |
|------------------------|----------|
| MTTFd (EN ISO 13849-1) | 513,14 a |
|------------------------|----------|

Function

| | |
|--------------------------|-----|
| Selectable menu language | yes |
| Password Protection | yes |

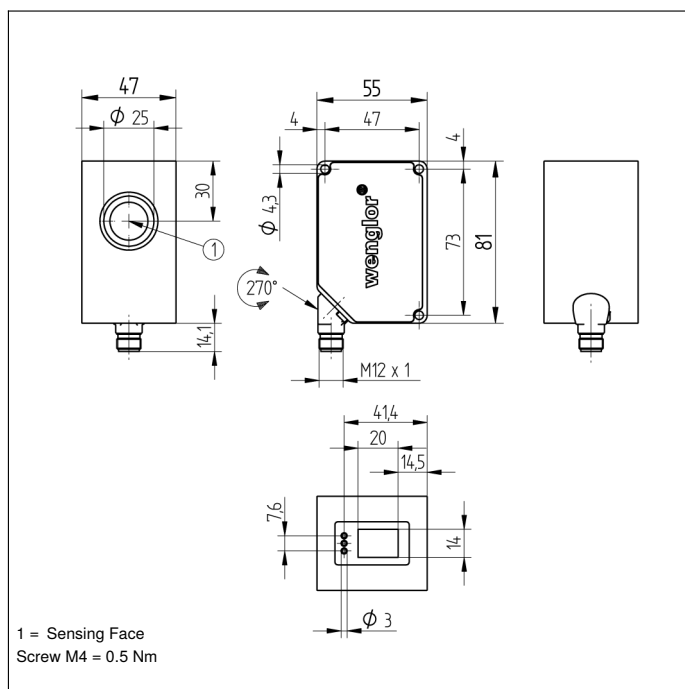
| | |
|---------------|---|
| Error Output | ● |
| PNP NO | ● |
| Analog Output | ● |
| IO-Link | ● |

| | |
|-----------------------------------|--------|
| Connection Diagram No. | 183 |
| Control Panel No. | X2 |
| Suitable Connection Equipment No. | 2 35 |
| Suitable Mounting Technology No. | 340 |

Display brightness may decrease with age. This does not result in any impairment of the sensor function.

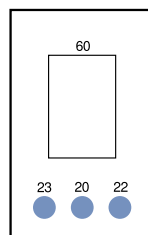
Complementary Products

| |
|-------------------------------|
| Analog Evaluation Unit AW02 |
| IO-Link Master |
| PNP-NPN Converter BG2V1P-N-2M |
| Software |

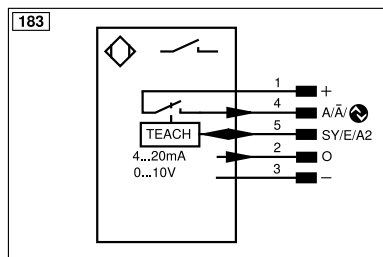


Ctrl. Panel

X2



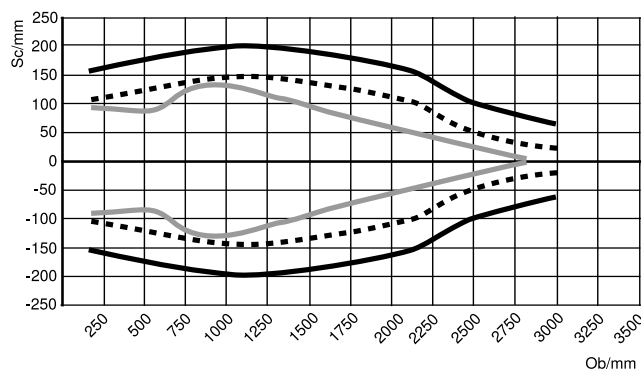
20 = Enter key
22 = Up key
23 = Down key
60 = display



Characteristic response curve

Characteristic curves show the position of the center or the front edge of the measured object (100 × 100 mm plate) at the time of switching.

UMS303U035



Ob = Object
Sc = Sonic cone width

— Standard sonic cone
(center of the measured
object)
- - - Extra-narrow sonic
cone (center of the
measured object)
... Standard sonic cone
(front edge of the
measured object)

