

# Fiber-optic amplifier

## ODX402P0099



- Add-on module for ODX402P0088
- Mount for fiber optic cable adapter 3
- No wiring required thanks to plug connector
- Recognition of transparent objects

### Optical Data

|                           |           |
|---------------------------|-----------|
| Switching Hysteresis      | < 15 %    |
| Light Source              | Red Light |
| Wavelength                | 660 nm    |
| Service Life (T = +25 °C) | 100000 h  |
| Max. Ambient Light        | 10000 Lux |

### Electrical Data

|   |                            |
|---|----------------------------|
| Current Consumption (U <sub>b</sub> = 24 V) | + 10 mA                    |
| Response Time                               | + 70 µs                    |
| On-/Off-Delay                               | 0...10000 ms               |
| Temperature Drift                           | < 10 %                     |
| Temperature Range                           | -25...60 °C                |
| Short Circuit Protection                    | yes                        |
| Reverse Polarity Protection                 | yes                        |
| Overload Protection                         | yes                        |
| Teach Mode                                  | NT, MT, ZT, DT, FT, HT, TP |
| Protection Class                            | III                        |

### Mechanical Data

|                      |             |
|----------------------|-------------|
| Setting Method       | Menu (OLED) |
| Housing Material     | Plastic     |
| Degree of Protection | IP50        |
| DIN-Rail mounting    | 35 mm       |

### Safety-relevant Data

|                        |        |
|------------------------|--------|
| MTTFd (EN ISO 13849-1) | 1089 a |
|------------------------|--------|

PNP NO

Control Panel No.

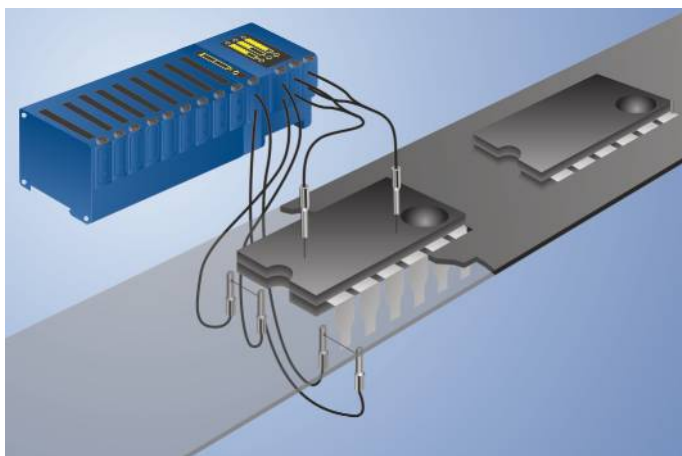
X3

Suitable Fiber-Optic Cable Adapter No.

003

Display brightness may decrease with age. This does not result in any impairment of the sensor function.

These sensors are connected to the basic module. wenglor fiber optic cables can be adapted to them. The graphic display assures easy, menu-driven sensor setup. Signal strengths and the switching threshold can be read from the display as numeric values or as a bar graph. Convenient programming and quick diagnosis is possible via the IO-Link interface.

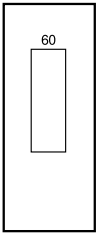


### Complementary Products

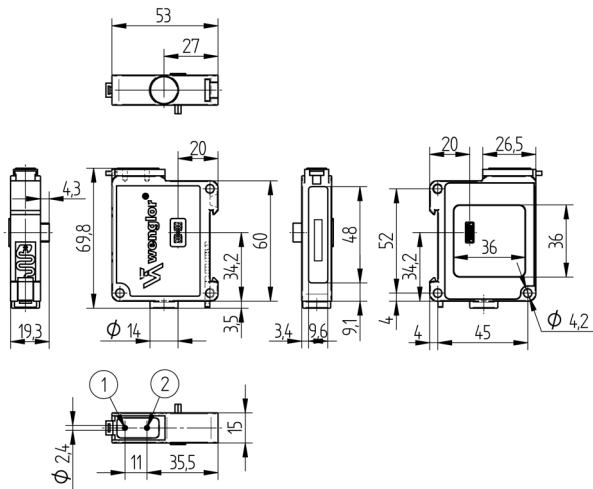
|                           |
|---------------------------|
| Glass Fiber-Optic Cable   |
| Plastic Fiber-Optic Cable |

**Ctrl. Panel**

**X3**



60 = display



1 = Transmitter Diode  
2 = Receiver Diode

