

Plastic Fiber-Optic Cable

Through-Beam Mode

K20

Part Number



- Especially suitable in applications where only minimal space is available
- Fiber-optic cable can be cut to length by the cutting tool

Technical Data

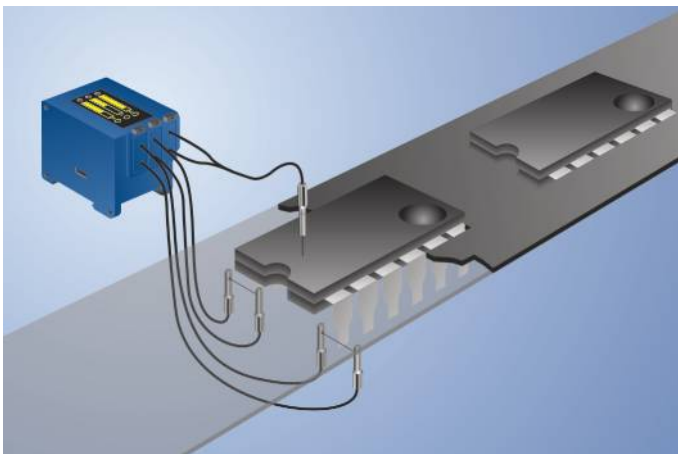
Optical Data

Fiber Core Diameter	1 mm
Fiber Core	PMMA
Fiber	Step Index
Fiber Distribution	parallel arrangement
Range with Sensor Type	200 mm
Opening Angle	55 °

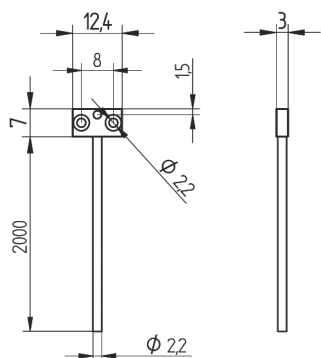
Mechanical Data

Temperature Range	-40...85 °C
Bending Radius	20 mm
Fiber-Optic Length	2 m
Jacket Material	PE (black)
Material End Sleeve	Aluminum
Jacket Diameter	2,2 mm
Light Emission	sidewise

Plastic fiber-optic cables are very flexible and suitable for use in confined spaces. The fiber optics are supplied in 2 m lengths. Special lengths of up to 50 m are possible. Users can shorten the fiber optics using the Z0015 cutting tool.



K20



All dimensions in mm (1 mm = 0.03937 Inch)

