

Notice of Discontinuation
OPT162-P08
Retro-Reflex Sensor



EN



Notice of Discontinuation

Discontinued product: OPT162-P08

Recommended successor product: OPT1600

Discontinued by: 31.03.2016

Please find a detailed product comparison below:

Technical Data	Discontinued Product OPT162-P08	Successor Product OPT1600
Photo of Product		
Optical Data		
Range	6500 mm	6500 mm
Reference Reflector/Reflector Foil	RQ100BA	RQ100BA
Min. Distance to Reflector	100 mm	100 mm
Switching Hysteresis	< 15 %	< 15 %
Light Source	Red Light	Red Light
Polarization Filter	yes	yes
Service Life (T = +25 °C)	100000 h	100000 h
Max. Ambient Light	10000 Lux	10000 Lux
Opening Angle	5 °	5 °
Two-Lens Optic	yes	yes
Electrical Data		
Supply Voltage	18 ... 30 V DC	18 ... 30 V DC
Current Consumption Sensor (U _b = 24 V)	< 30 mA	< 30 mA
Switching Frequency	100 Hz	100 Hz
Response Time	5 ms	5 ms
Temperature Drift	< 10 %	< 10 %
Temperature Range	-15 ... 50 °C	-15 ... 50 °C
Number of Switching Outputs	1	1
Switching Output Voltage Drop	< 0.8 V	< 0.8 V
PNP Switching Output/Switching Current	200 mA	200 mA
Short Circuit Protection	yes	yes
Reverse Polarity Protection	yes	yes

Technical Data	Discontinued Product OPT162-P08	Successor Product OPT1600
Overload Protection	yes	yes
Logic	yes	yes
Single Discharge	yes	yes
Block Forwarding	yes	yes
Solenoid Valve	yes	yes
Protection Class	III	III

Mechanical Data

Setting Method	Potentiometer	Potentiometer
Housing Material	Plastic	Plastic
Full Encapsulation	ja	yes
Degree of Protection	IP65	IP65
Connection	M12 × 1; 4-pin	M12 × 1; 4-pin
Cable Length	2 m	2 m

Pneumatic Solenoid Valve Unit

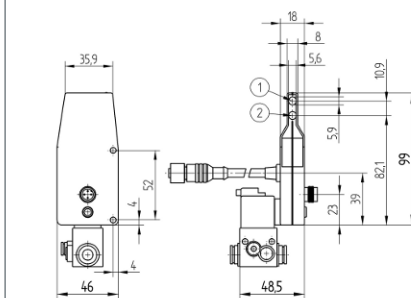
Valve no.	K04	K04
Supply Voltage Valve	19.2 ... 28.8 V	19.2 ... 28.8 V
Current Consumption Valve	86 mA	86 mA
Operating Pressure	4 ... 7 bar	4 ... 7 bar
Nominal Width	0.8 mm	0.8 mm
Nominal flow rate 1 → 2	20 NI/min	20 NI/min
Nominal flow rate 2 → 3	100 NI/min	100 NI/min
Supply-Line Connector Pipe	2× 8×1	2× 8×1
Working-Line Connector Pipe	4×1	4×1
Single Discharge	yes	yes
Switching function	NC	NC

Output Functions

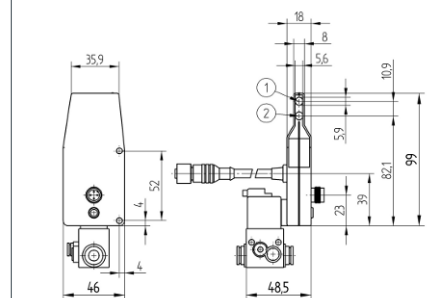
Output	PNP NO	PNP NO
--------	-----------	-----------

Technical drawings/connection diagrams/approvals

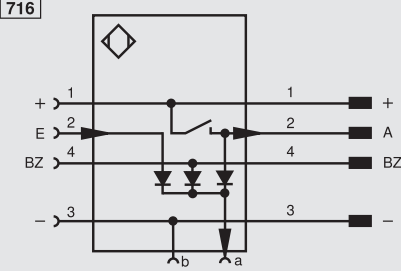
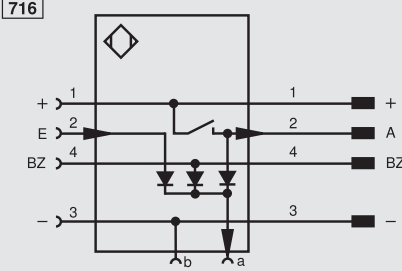
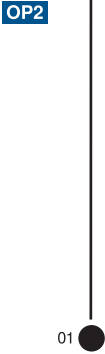

Dimensioned Picture



① = Transmitter Diode
② = Receiver Diode



① = Transmitter Diode
② = Receiver Diode

Technical Data	Discontinued Product OPT162-P08	Successor Product OPT1600
Connection Diagram		
Ctrl. Panel	 <p>01 = Switching Status Indicator</p>	 <p>01 = Switching Status Indicator</p>
Approvals	