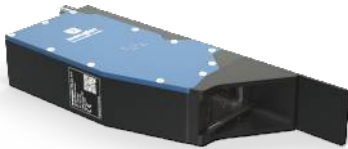


2D/3D Profile Sensor

MLZL141

Part Number

weCat3D



- Compact and robust format (IP67)
- Easy integration
- High profile quality for high process reliability
- Integrated cooling/rinsing
- Optional integrated data evaluation for tracking point determination

Fully automated welding places great demands on quality and precision. Consequently, the correct position of the respective seam must be reliably detected before the welding process is started in the robot cell. Welding systems are equipped with innovative weCat3D 2D/3D profile sensors for the purpose of weld seam tracking.



Technical Data

Optical Data	
Working range Z	74...158 mm
Measuring range Z	84 mm
Measuring range X	38...62 mm
Linearity Deviation	65 µm
Resolution Z	8,3...32,5 µm
Resolution X	32...64 µm
Light Source	Laser (red)
Wavelength	690 nm
Laser Class (EN 60825-1)	3R

Environmental conditions	
Ambient temperature	0...45 °C
Storage temperature	-20...70 °C
EMC	DIN EN 61000-6-2; 61000-6-4
Shock resistance per DIN IEC 68-2-27	30 g / 11 ms
Vibration resistance per DIN IEC 60068-2-6	6 g (10...55 Hz)

Electrical Data	
Supply Voltage	18...30 V DC
Current Consumption (U _b = 24 V)	300 mA
Measuring Rate	200...4000 /s
Subsampling	800...4000 /s
Inputs/Outputs	4
Switching Output Voltage Drop	< 1,5 V
Switching Output/Switching Current	100 mA
Short Circuit Protection	yes
Reverse Polarity Protection	yes
Overload Protection	yes
Interface	Ethernet TCP/IP
Transmission rate	100/1000 Mbit/s
Protection Class	III
FDA Accession Number	2210379-000

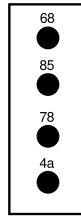
Mechanical Data	
Housing Material	Aluminum, anodised
Degree of Protection	IP67
Connection	M12 × 1; 12-pin
Type of Connection Ethernet	M12 × 1; 8-pin, X-cod.
Optic Cover	Plastic, PMMA

Safety-relevant Data	
MTTFd (EN ISO 13849-1)	186,11 a
Scope of delivery	ZLSE010
Configurable as PNP/NPN/Push-Pull	●
Switchable to NC/NO	●
Push-Pull	●
Connection Diagram No.	1022 1034
Control Panel No.	A22
Suitable Connection Equipment No.	50 87
Suitable Mounting Technology No.	343

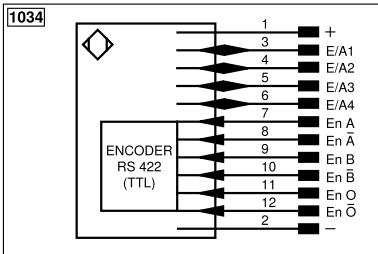
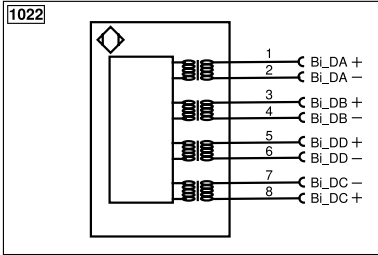
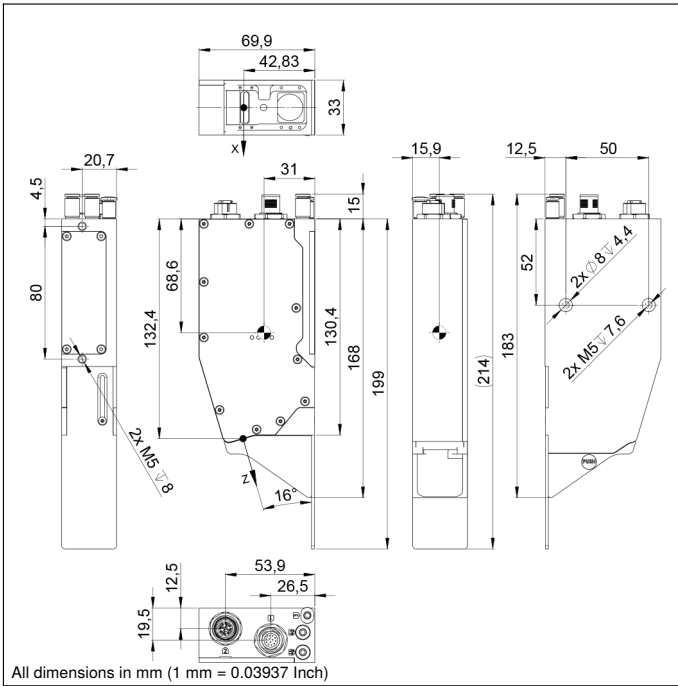
Complementary Products

Connection cables
Control Unit
EHSS001 Switch
Machine Vision Controller MVC
Software
ZLSE012 Protective screen retainer

Ctrl. Panel

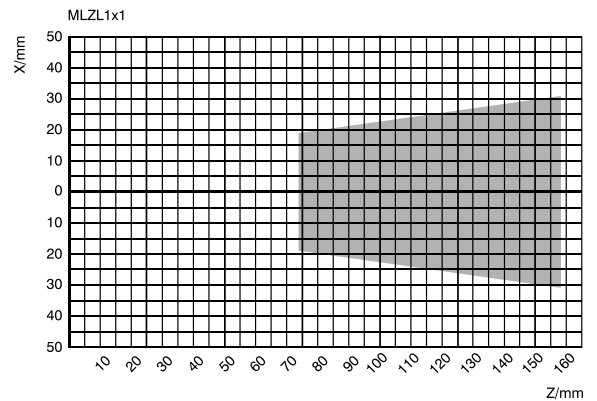
A22


4a = User LED
 68 = Power LED
 78 = Module status
 85 = Link/Act LED



Legend			
+	Supply Voltage +	nc	Not connected
-	Supply Voltage 0 V	U	Test Input
~	Supply Voltage (AC Voltage)	Ü	Test Input inverted
A	Switching Output (NO)	W	Trigger Input
Ä	Switching Output (NC)	W-	Ground for the Trigger Input
V	Contamination/Error Output (NO)	O	Analog Output
V̄	Contamination/Error Output (NC)	O-	Ground for the Analog Output
E	Input (analog or digital)	BZ	Block Discharge
T	Teach Input	Amv	Valve Output
Z	Time Delay (activation)	a	Valve Control Output +
S	Shielding	b	Valve Control Output 0 V
RxD	Interface Receive Path	SY	Synchronization
TxD	Interface Send Path	SY-	Ground for the Synchronization
RDY	Ready	E+	Receiver-Line
GND	Ground	S+	Emitter-Line
CL	Clock	±	Grounding
E/A	Output/Input programmable	SnR	Switching Distance Reduction
IO-Link	IO-Link	Rx+/-	Ethernet Receive Path
PoE	Power over Ethernet	Tx+/-	Ethernet Send Path
IN	Safety Input	Bus	Interfaces-Bus A(+)/B(-)
OSSD	Safety Output	La	Emitted Light disengageable
Signal	Signal Output	Mag	Magnet activation
BL_D+/-	Ethernet Gigabit bidirect. data line (A-D)	RES	Input confirmation
ENo RS422	Encoder 0-pulse 0/0 (TTL)	EDM	Contactor Monitoring
PT	Platinum measuring resistor	ENARs422	Encoder A/Ä (TTL)
			Wire Colors according to DIN IEC 60757
			BK Black
			BN Brown
			RD Red
			OG Orange
			YE Yellow
			GN Green
			BU Blue
			VT Violet
			GY Grey
			WH White
			PK Pink
			GNYE Green/Yellow

Measuring field X, Z



Z = Working distance
 X = Measuring Range

