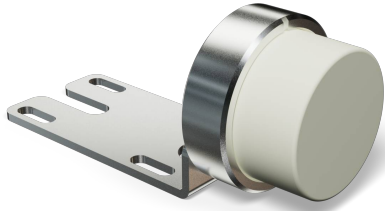


Inductive Sensor Head for Extreme Temperature Ranges

INTT220

Part Number



- Easy replacement thanks to quick-release fastener
- Interchangeable sensor head
- Long service life at temperatures of up to 250 °C
- Minimal mounting clearance thanks to wenglor we-proTec
- Switching distance configurable via IO-Link

Technical Data

Inductive Data	
Switching Distance	25 mm
Standard Target	75 × 75 mm
Correction Factors Stainless Steel V2A/CuZn/Al	0,60/1,00/0,85
Mounting	Non-flush
Mounting A/B/C/D in mm	10/120/50/20
Mounting B1 in mm	0...40
Switching Hysteresis	< 10 %
Use	With INTT2xx analysis module

Electrical Data	
Sensor head temperature range	-10...250 °C
Service Life (T = +200 °C)	100000 h
Service Life (T = +250 °C)	60000 h

Mechanical Data	
Sensing face	Plastic, PEEK
Sensor head material	Stainless steel, V2A (1.4305 / 303)
Degree of Protection	IP50
Degree of Protection	IP51*
PWIS-free	yes

Function	
Programmable switching distance	15/20/25 mm
	1 × initial start-up instructions
	1 × sensor head

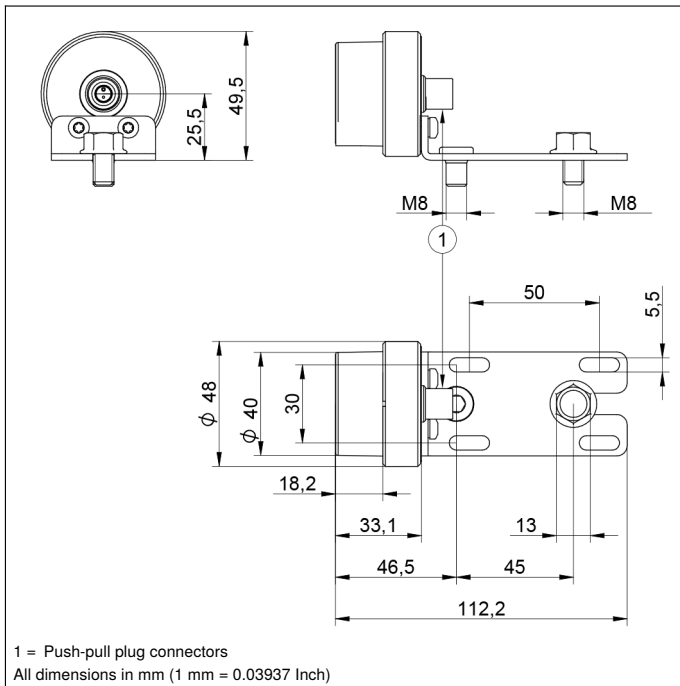
IO-Link	●
Error Output	●
PNP NO	●

* IP51 only when the sensor head is mounted with the active surface facing upward (water droplets falling from above).



Complementary Products

Inductive analysis module
IO-Link Master
Software



Mounting

