

# Safety Analysis Module for Safety Through-Beam Sensor

## SS2-00VA000R2



- Four through-beam sensors can be connected
- Monitoring of external safety relays
- Please note: According to Machinery Directive 2006/42/EC, this article may only be used as a spare part.
- Potential-free safety relay outputs

The analysis module is used to monitor up to 4 through-beam sensors. Interruption of one or more beams results in deactivation of the safety output.

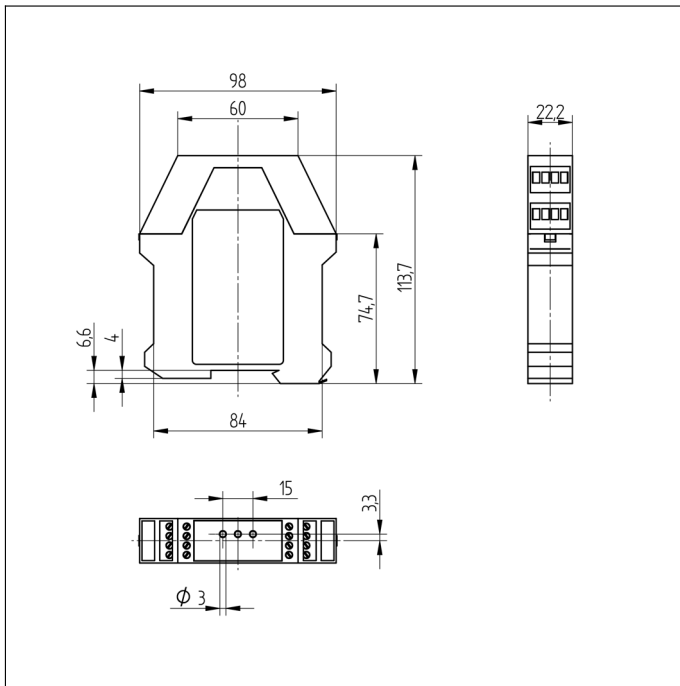
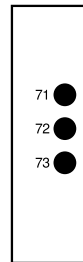


Electrical Data	
Supply Voltage	24 V DC
Current Consumption (U <sub>b</sub> = 24 V)	< 260 mA
Response Time	< 80 ms
Temperature Range	0...55 °C
Safety Output	Relay
Number of safety outputs (OSSDs)	2
Switching Output Voltage Drop	< 3 V
PNP Switching Output/Switching Current	< 100 mA
Relay Output/Switching Current (250 VAC)	2 A
Reverse Polarity Protection	yes
Protection Class	II
Mechanical Data	
Housing Material	Plastic, PA
Degree of Protection	IP20
Connection	Screw Clamp
Safety-relevant Data	
Safety Category (EN ISO 13849-1)	2
Performance Level (EN ISO 13849-1)	PL c
PFHD	3,16 × E-7 1/h *
Safety Integrity Level (EN 62061)	SILCL 1
Function	
Restart Inhibit	yes
Contact Monitoring	yes
Connection Table No.	<b>36</b>
Control Panel No.	<b>S8</b>

\* PFHD for control incl. 4 SL2

### Complementary Products

SL2-00Nx000H2 through-beam sensor  
Software


**Ctrl. Panel**
**S8**


71 = Channel 1  
 72 = Channel 2/Error Indicator  
 73 = OSSD/Diagnosis

**T10<sub>0</sub> depending on the strain**

Data for SS2-00VA000R2 with up to 4 pairs of Safety Through Beam Sensors SL2

	Strain	Medium: 220d/a, 16h/d	Strong: 330d/a, 16h/d
	Switching Intervall		
2 A at 230 V AC	30 s	1.89 a	1.26 a
	1 min	3.79 a	2.53 a
	5 min	18.94 a	12.63 a
	10 min	> 20 a	> 20 a
	1 h	> 20 a	> 20 a
	8 h	> 20 a	> 20 a
0.5 A at 24 V DC	30 s	0.95 a	0.63 a
	1 min	1.89 a	1.26 a
	5 min	9.47 a	6.31 a
	10 min	18.94 a	12.63 a
	1 h	> 20 a	> 20 a
	8 h	> 20 a	> 20 a

