

Flat Light

infrared, 128 × 128 mm

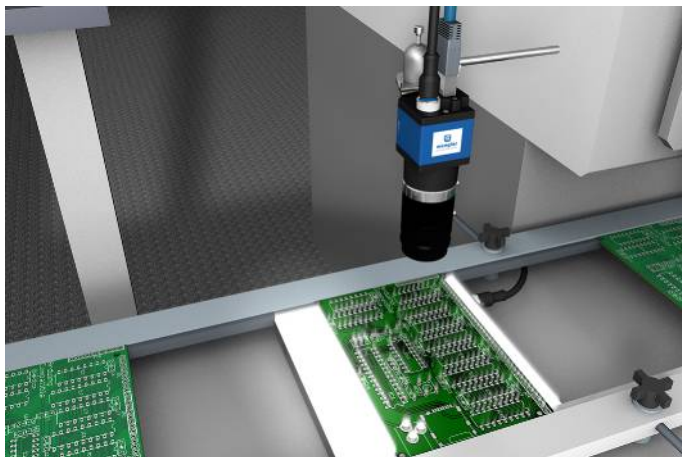
ZVZF401

Part Number



- Continuous mode or strobe mode synchronized with the camera
- Diffuse light for transmitted light and incident light applications
- Rugged housing (IP67) with minimal thickness and narrow edge

wenglor backlights are ideally suited for vision applications in which large areas need to be illuminated. They can be operated in continuous mode, or synchronized to the Machine Vision Camera in flash mode. Thanks to their diffuse light, the backlights are ideal for applications with transmitted light or incident light. Above all in systems where space is limited, users profit from the rugged housing (IP67) with minimal thickness and narrow framing, and at the same time from the large illuminated surface area.



Technical Data

Optical Data	
Light Source	Infrared Light
Wavelength	850 nm
Service Life (T = +25 °C)	100000 h
Luminance (Continuous Mode)	~ 1,32 W/m ² sr
Luminance (Flash Mode)	~ 7,7 W/m ² sr
Environmental conditions	
Atmospheric humidity	< 80%, non-condensing
Electrical Data	
Supply Voltage	18...30 V DC
Current consumption flash mode overdrive (operating voltage = 24 V)	< 2700 mA
Current Consumption Continuous Mode (U _b = 24 V)	< 470 mA
Flash Duration (max.)	17...30000 μs
Duty Cycle (max.)	< 0,2
Short Circuit Protection	yes
Reverse Polarity Protection	yes
Overload Protection	yes
Protection Class	III
Mechanical Data	
Luminous Field	120 × 120 mm
Housing Material	Aluminum, anodised
Optic Cover	Plastic, PMMA
Degree of Protection	IP67
UL Enclosure Type	1
Connection	M12 × 1; 4/5-pin
Safety-relevant Data	
MTTFd (EN ISO 13849-1)	222,64 a
Connection Diagram No.	181
Suitable Connection Equipment No.	37

Complementary Products

ZC4G002 connection cable
ZDCG004 connection cable
ZDCG005 connection cable

